



Picture is a representation of actual product

Approvals



Available upon request

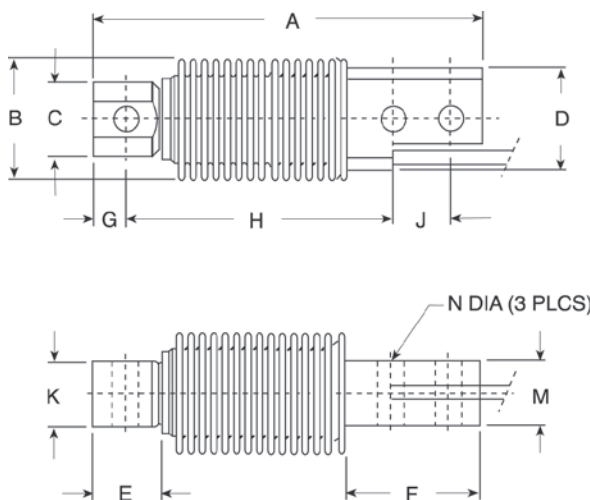
Available upon request

Order Information

Load Rating	Part #	Est. Weight	Price
5 kg	30165	2 lb	Consult
10 kg	30166	2 lb	Consult
20 kg	30167	2 lb	Consult
50 kg	30168	2 lb	Consult
100 kg	30169	2 lb	Consult
200 kg	30170	2 lb	Consult
500 kg	36463	2 lb	Consult

Dimensions

Rated Capacity	A	B	C	D	E	F	G	H	J	K	M	N
kg/mm												
5 to 500	120.0	40.0	23.0	32.0	20.5	45.5	10.0	82.0	18.0	20.0	20.0	8.2



Interchangeable Products

- RICE LAKE WEIGHING SYSTEMS
RL9018SS page 107
- RICE LAKE WEIGHING SYSTEMS
RLHBB
- VPG® REVERE
SHB page 253
- HBM®
Z6 page 226

Weigh Module Available

- RICE LAKE WEIGHING SYSTEMS
RL1700 HE page 23

Specifications

Full Scale Output:
2.0 mV/V

Output Resistance:
355 (± 5) ohm

Input Resistance:
380 (± 10) ohm

Material/Finish:
Stainless steel

Temperature:
Compensated range
14 °F to 104 °F (-10 °C to 40 °C)
Operating range
0 °F to 150 °F (-18 °C to 65 °C)

Seal Type:
Welded-seal, IP68

Safe Overload:
150% full scale

Rated Excitation:
5 to 10 VDC (15 V maximum)

Combined Error:
0.02% full scale

Insulation Resistance:
2,000 megohm

Deflection at Capacity:
0.015 in

Cable Length:
10 ft

Cable Diameter:
0.220 in
Polyurethane jacket

Cable Color Code:
Blue +Excitation
Black -Excitation
White +Signal
Red -Signal
Green +Sense
Grey -Sense

Warranty:
One-year limited

Approvals:
cFMus
NTEP
Ex (Available upon request)
OIML (Available upon request)